

MERINDA STUDIO

LET'S HANG SOME WALLPAPER - ULTRASMOOTH

To be totally upfront, we recommend hiring a professional to tackle this task. It's tricky, messy and you can easily damage the wallpaper by installing it incorrectly. (PS - We aren't held accountable for issues you have in hanging your wallpaper).

However, if you're up for the challenge, here are a few tips:

TO START

Our smooth paper is pre-pasted and only requires water to activate the glue. It is printed with a slight overlap for easy installation and a seamless repeat.

Unroll each roll of wallpaper and inspect for defects. Please report and return defective paper BEFORE it is cut and installed. Email hello@merindastudio.com in the rare case of defective paper.

Tools to have on hand: wallpaper tray, tape measure, level, sponge, craft knife, scissors, pencil, clean water, floor protection, a long flat surface and a patient helper

I. PREP THE WALLS

The wall surface should be clean, dry, smooth and free of old wallpaper and irregularities. Fill in bumps and grooves, and sand down for smoothness. You might want to consider a wallpaper primer when the wall isn't a perfect canvas - otherwise bubbles or creases can appear over time. Allow for recently painted or primed walls to cure for at least 4 weeks before installation.

We recommend applying wallpaper over a solid, light color. Installation not recommended over textured walls or those with scrubable paint.

Allow enough time to complete the entire installation in one day. Wallpaper shrinks as it dries, so completing the task in a single day ensures the pattern will be seamless when dry.

2. PREPARE THE PAPER

Unroll each strip and inspect for any defects (email hello@merindastudio.com if so). Ensure the rolls face the same way. Each roll has a white label at the bottom. The quantity numbers do not need to be in order - the rolls are identical.

3. MEASURE

Start from the corner of the wall farthest away from the entry of line of sight. Once you start in one direction, you must commit to it. The last installed panel will likely not match seamlessly with the first panel.

Measure the width of the wallpaper (ours is 24") minus 1/2 inch (23.5") to allow for overlap or trim on wall edge and mark with a pencil dot. Using a level, draw a straight vertical line from the dot to line up the edge of the wallpaper against. Why? Wall edges aren't always vertically straight.

Then, measure for wall height from the highest point of the section of wall you are measuring. Unroll the wallpaper strip and measure the length to the height of the ceiling, plus 3 additional inches to allow for trimming. Cut the wallpaper here.

4. ACTIVATE THE GLUE

MERINDA wallpaper is pre-pasted and only requires clean water to activate the adhesive glue. Enough water must be applied to saturate the paper and create a sticky consistency.

You can use a clean paint roller or sponge to wet the back of the paper OR use a spray bottle to saturate the adhesive. Be consistent with the amount of water you use to cover the panel to avoid over or under saturating certain parts.

5. BOOK THE GLUE

Gently fold the top and bottom of the panel so that the pasted sides meet together in the middle and the pattern is facing out (each sticky quarter lays against another quarter). Take care not to crease the paper - just a gentle fold. This is called 'booking' and helps relax the paper so the edges don't curl off the wall.

Allow each panel of paper to rest in this phase for 3-5 minutes before hanging. As the paper absorbs the water, it activates the glue. As it dries, the paper tightens and shrinks to create a smooth finish.

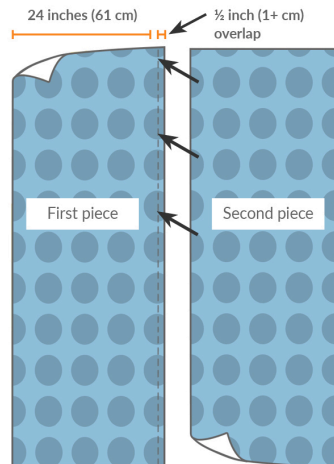
6. APPLY THE WALLPAPER

Unfold the top half of the wallpaper panel, leaving the bottom half booked. Position the glue-exposed top of the wallpaper on the wall, using your pencil line as an edge guide,

leaving about an inch of extra length at the top and along the corner edge of the wall. Once satisfied with the positioning, unfold the remaining booked portion of the wallpaper. Using a damp sponge, smooth downward and outward, working large bubbles out of the paper.

Begin your second roll and hang it so it overlaps the previous roll by approximately .5". Match the pattern on the wallpaper at EYE-LEVEL and overlap as noted above. Measure and cut. Patterns are meant to be matched at eye-level – discrepancies are negated at the top and bottom of the walls.

Our paper is printed with a 0.5" overlap of the pattern on one side for matching purposes. The overlap may vary from roll to roll so be mindful and visually match the repeat. There is no need to trim the overlap. Because wallpaper shrinks as it dries, overlapping guarantees there will be no spaces between panels.



7. LET PAPER DRY

At least 3 hours to guarantee it has returned to its original size

8. TRIM & CLEAN THE WALLPAPER

Using your craft knife, carefully trim the top, corner edge and bottom edge. A dull knife will tear the paper, so make sure the blade is sharp.

Clean the wallpaper with a damp sponge to remove any glue that escaped from the seams.

High fives all around.